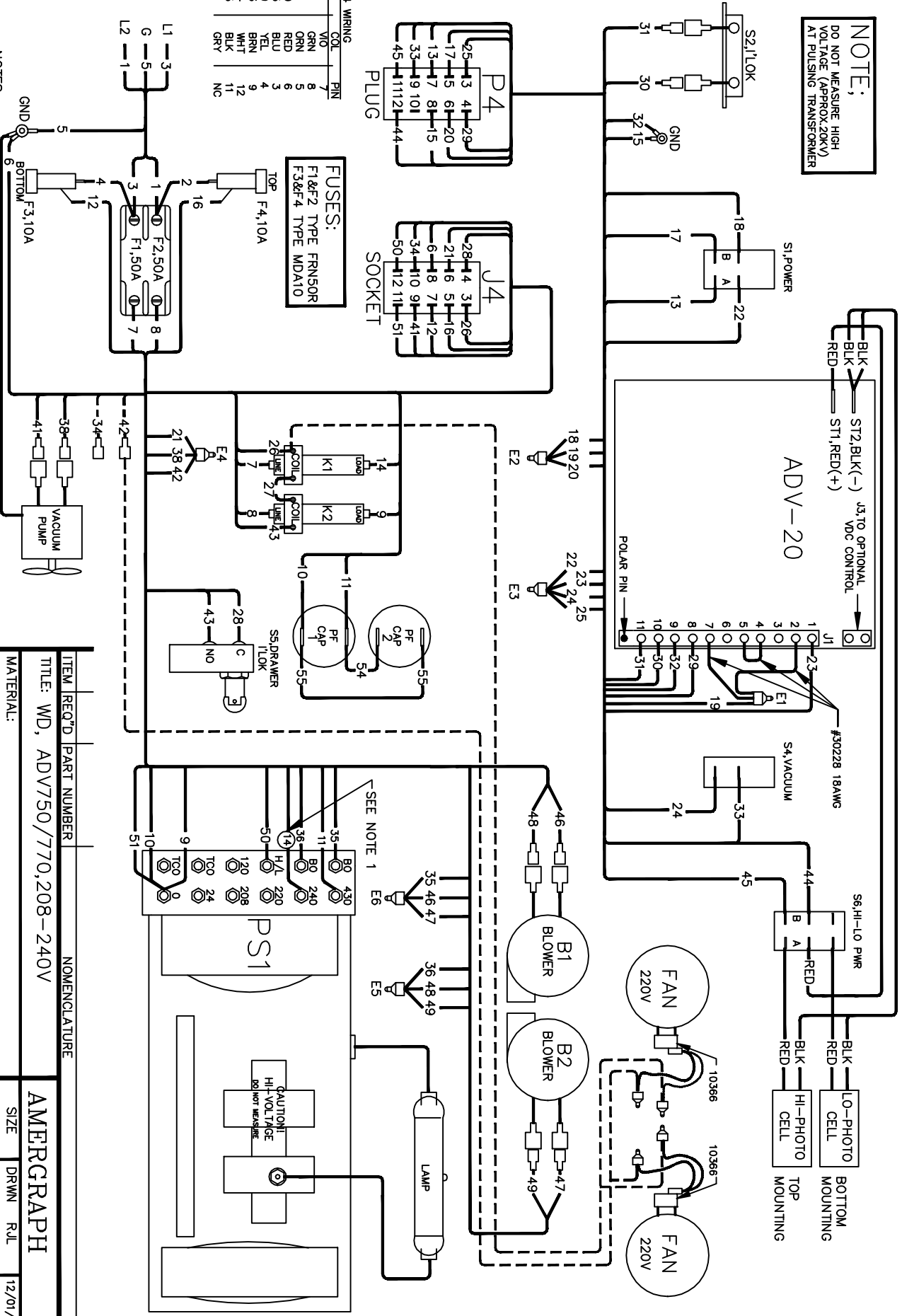


NOTE:
DO NOT MEASURE HIGH VOLTAGE (APPROX. 20KV) AT PULSING TRANSFORMER



P4 WIRING

1	GRN	7
2	GRN	8
3	RED	5
4	RED	6
5	BLU	9
6	TEL	3
7	BRN	4
8	WHT	12
9	WHT	11
10	BLK	10
11	GRY	11
12	GRY	11
13	GRN	15
14	GRN	17
15	GRN	15
16	GRN	17
17	GRN	15
18	GRN	17
19	GRN	15
20	GRN	17
21	GRN	15
22	GRN	17
23	GRN	15
24	GRN	17
25	GRN	15
26	GRN	17
27	GRN	15
28	GRN	17
29	GRN	15
30	GRN	17
31	GRN	15
32	GRN	17
33	GRN	15
34	GRN	17
35	GRN	15
36	GRN	17
37	GRN	15
38	GRN	17
39	GRN	15
40	GRN	17
41	GRN	15
42	GRN	17
43	GRN	15
44	GRN	17
45	GRN	15

FUSES:
F1&F2 TYPE FRN50R
F3&F4 TYPE MDA10

- NOTES:**
1. SET WIRE #4 (VOLTAGE SELECTION) TO 208, 220, 240 TAP TO MATCH LINE VOLTAGE
 2. VAC PUMPS MUST BE DERATED IF RUN ON OTHER THAN RATED VOLTAGE.

WIRE NUMBERS 53&52 NOT USED ON ADV750/770

ITEM	REC'D	PART NUMBER	NONNENCLATURE
TITLE: WD, ADV750/770, 208-240V			
MATERIAL:			
FINISH:			
UNLESS OTHERWISE SPECIFIED TOLERANCES ARE: FRACT. ± 1/64 ANGULAR 1/2° DECIMAL ± .005 HOLE DIAS ± .005			
DO NOT SCALE THIS PRINT			
ALL DIMENSIONS ARE IN INCHES REMOVE ALL BURRS BREAK ALL SHARP EDGES			
SIZE	DRWN	RJL	12/01/95
B	CHK'D	APP'D	
AMERGRAPH			REV
WD119			